

1 2 3 4 5 6

A

B

C

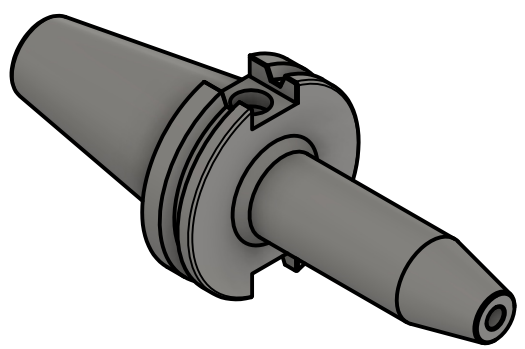
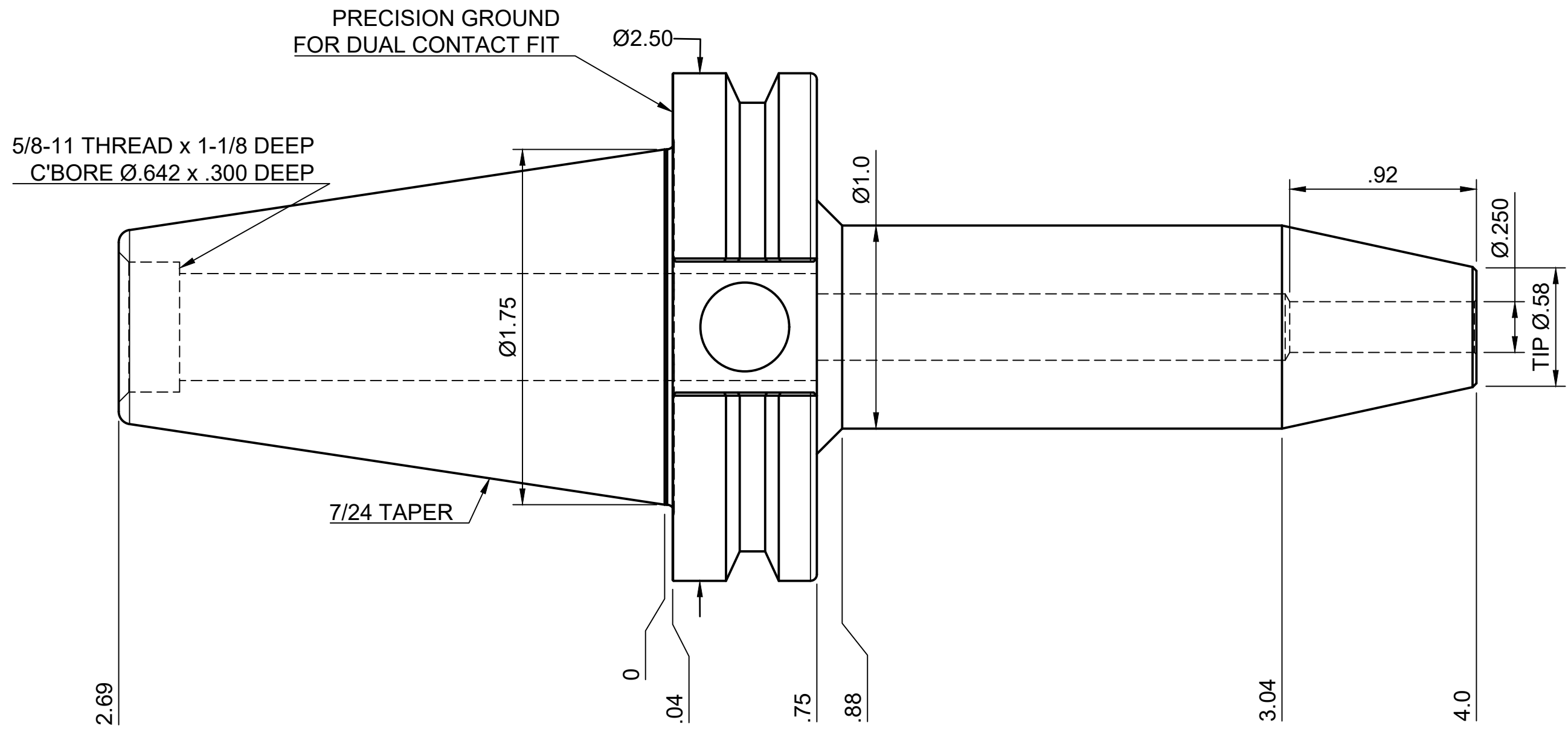
D

A

B

C

D



NOTES:
WORKS ON ALL CAT40 MACHINES WITH DUAL CONTACT SPINDLES
COMPATIBLE WITH BIG-PLUS® SPINDLES
ACCEPTS 0.250 SHANK TOOLING
FOR MORE PRODUCT DETAILS PLEASE GO TO MARITool.COM
AND SEARCH ITEM # LISTED ON THIS PRINT

MARITool	
www.maritool.com	
ITEM#	CAT40 SF.250-4.0D
Made In USA / Drawn By FM	

1 2 3 4 5 6